

# Capital Campaign for the Adams County Historical Society

*A Home for Your History*



**Museum - Archives - Education Center**



**ADAMS COUNTY**  
*Historical Society*  
GETTYSBURG, PENNSYLVANIA



I hereby certify that the above described contains the  
Quantity of  
Wm. Gettys  
of Sunday  
by a D  
Witnessed this 5<sup>th</sup> day of April 1871

# Capital Campaign for the Adams County Historical Society

As a high school student, I was privileged to volunteer at ACHS. I spent hours deep in the stacks of historic material, organizing hundreds of boxes of papers, photos, and artifacts. One day, while flipping through a pile of business receipts, I came across something truly incredible - an original program from Lincoln's Gettysburg Address.

With over one million historic items in our care - many of national significance - discoveries like this are not uncommon. But ACHS isn't just a collection of old documents and artifacts - our mission is far more important than that. We hold onto the memory and legacy of one of America's most remarkable communities. It's a story that continues on today - something we are all part of. Now more than ever, it's time to build a new home for our history. I hope you'll join us!



Andrew Dalton, Executive Director

## Our Vision

Established in 1940 but with origins dating to 1888, ACHS is Adams County's official Historical Society and County Archives. Our vision is to establish a new Museum, Archives, and Education Center that will, for the first time, tell the complete story of Gettysburg and Adams County. Using rich human interest stories, visitors will experience some of America's most extraordinary moments through the eyes and ears of ordinary citizens.



## Today's Reality

Since 2011, ACHS has rented a temporary headquarters facility - the Wolf House - on the United Lutheran Seminary campus in Gettysburg. Due to severe space limitations, ACHS cannot fulfill its important mission of preservation and education. Large portions of the collection formerly displayed at Schmucker Hall, our previous headquarters, are stored offsite and remain inaccessible to the public. Additionally, all of the Society's storage locations lack vital fire safety mechanisms, security, and climate controls needed for the protection of irreplaceable historic items. Space constraints at our current facility also prevent us from creating exhibits, hosting large groups, and presenting on-site educational programs for visitors and the community.





# A New Home

The Adams County Historical Society will build a facility that both secures the collection and provides an exciting educational venue for the community and visitors to Gettysburg. This new building will contain the following core features:

**An Exhibit Gallery** that is artifact-driven, interactive, and rooted in powerful stories.

Here are some of the unique topics we'll showcase:

- *Dinosaur Footprints and Meteorites*
- *Native American Raids and Kidnappings on the Pennsylvania Frontier*
- *Thaddeus Stevens - Law, Education and Abolition in Early Gettysburg*
- *Life in a War Zone - Adams County Civilians in 1863*
- *The Eisenhowers in Gettysburg - Two World Wars and a Presidency*
- *Orchards and Industry - Adams County as a Fruit-Growing Powerhouse*
- *Suffrage, Integration, and Immigration - the Fight for Justice in Adams County*



**An Education Center** featuring history programs for all ages and interest levels. Here are a few of the Society's planned offerings:

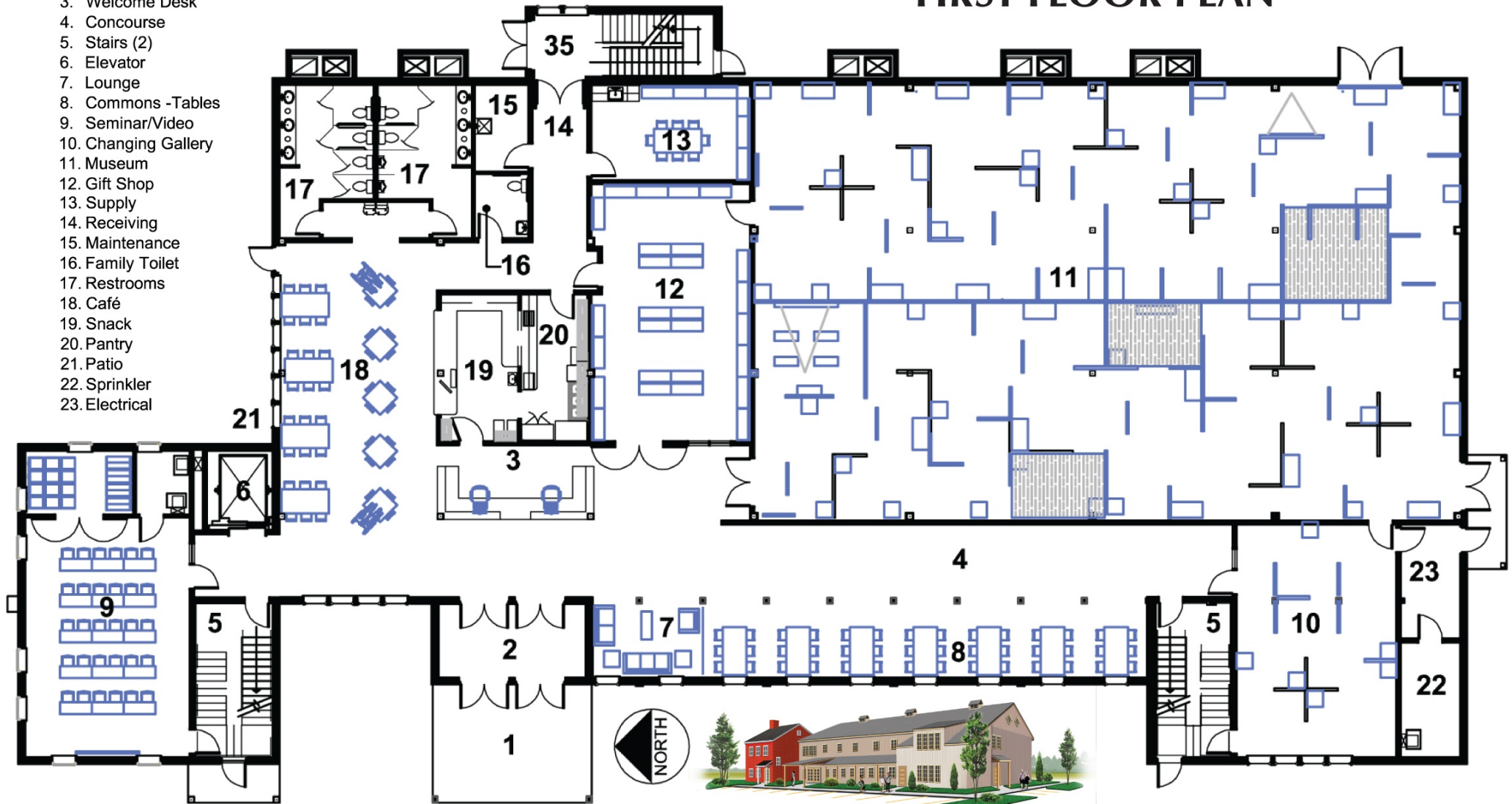
- *Lectures, book signings, and community programs*
- *School visits (K-12 and undergraduate)*
- *Genealogy and historic property research workshops*
- *Walking tours of neighboring historic sites and the town of Gettysburg*
- *Event venue overlooking the battlefield*

**A Reading Room and Archives** that ensures the long-term safety and preservation of the Society's priceless holdings.

- *Climate-controlled storage space for the collection*
- *Easy access to historic materials for visiting researchers*
- *A library and reading room for researchers, visiting scholars, and Gettysburg enthusiasts*

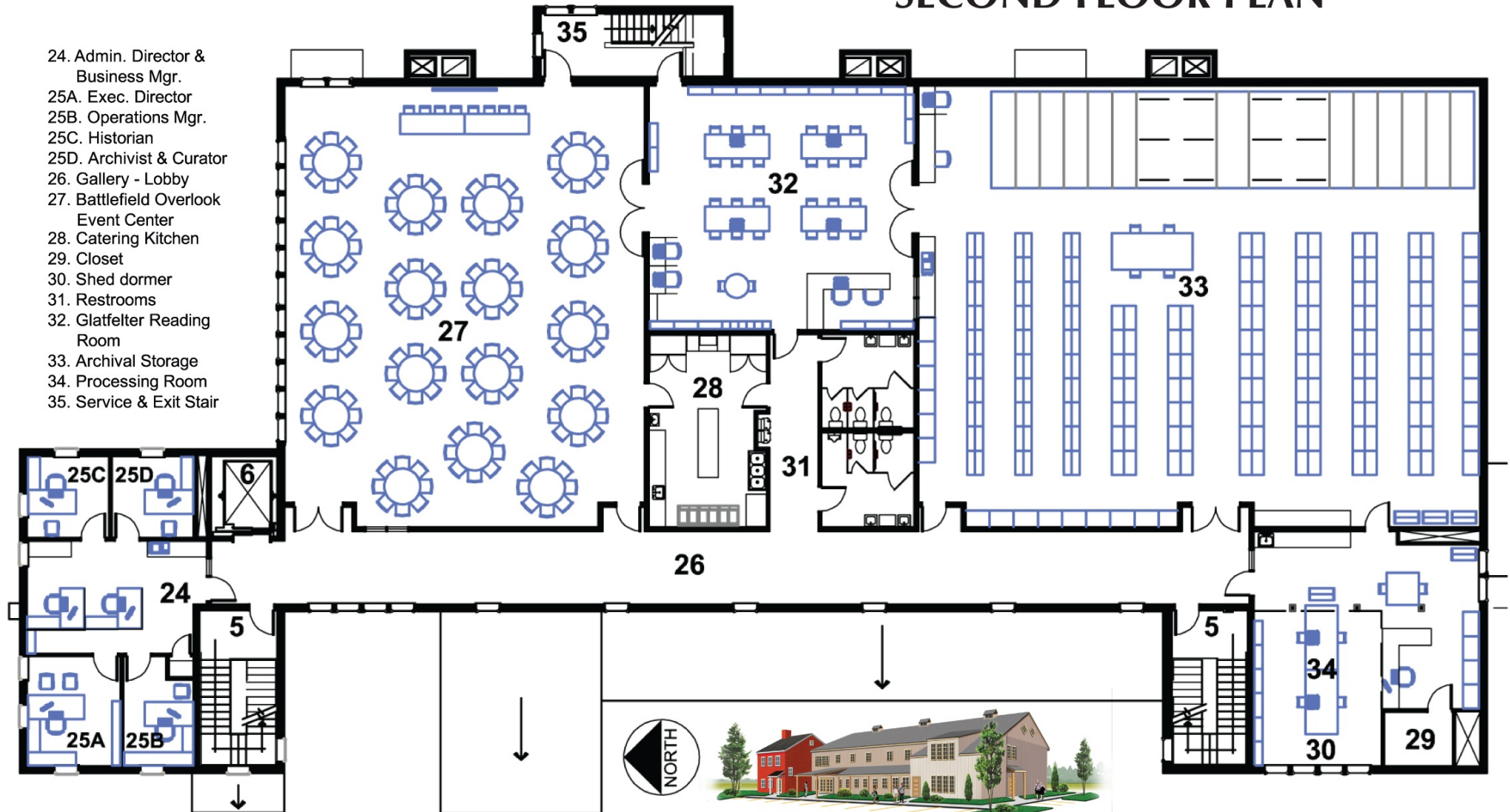
1. Entry Porch
2. Vestibule
3. Welcome Desk
4. Concourse
5. Stairs (2)
6. Elevator
7. Lounge
8. Commons -Tables
9. Seminar/Video
10. Changing Gallery
11. Museum
12. Gift Shop
13. Supply
14. Receiving
15. Maintenance
16. Family Toilet
17. Restrooms
18. Café
19. Snack
20. Pantry
21. Patio
22. Sprinkler
23. Electrical

## FIRST FLOOR PLAN



## SECOND FLOOR PLAN

- 24. Admin. Director & Business Mgr.
- 25A. Exec. Director
- 25B. Operations Mgr.
- 25C. Historian
- 25D. Archivist & Curator
- 26. Gallery - Lobby
- 27. Battlefield Overlook Event Center
- 28. Catering Kitchen
- 29. Closet
- 30. Shed dormer
- 31. Restrooms
- 32. Glatfelter Reading Room
- 33. Archival Storage
- 34. Processing Room
- 35. Service & Exit Stair



## Project Details



The new home of the Adams County Historical Society will be built at 625 Biglerville Road in Cumberland Township. This 2.85-acre lot, owned by ACHS, borders Transitions Healthcare and the Gettysburg National Military Park. The planned two-story Museum, Archives & Education Center will be roughly 25,000 square feet with a 4,000 square-foot accessory artifact storage facility.

The building will be within easy walking distance of downtown Gettysburg, two miles from the Gettysburg National Military Park Visitor Center, and just three miles from U.S. Route 15, making it accessible to both local residents and visitors. The targeted opening date for the facility is November 2022.

## Budget and Funding Sources

In 2020, a capital campaign was launched to secure the necessary funding for construction, approximately \$8-9 million, primarily from individual donors and charitable foundations. In addition, ACHS anticipates receiving funds from the Commonwealth of Pennsylvania through the Redevelopment Assistance Capital Program (RACP). By June, 2021, over \$5 million has been raised in gifts and pledges.

## Getting Involved

A new home for the Adams County Historical Society will not only ensure the preservation and protection of priceless historic treasures for generations to come, it will also allow ACHS to showcase Gettysburg and Adams County's remarkable role in American history for new and diverse audiences. We look forward to working with you on this important project!

# Naming Opportunities

*Based on a 5-year maximum pledge period. Numbers correspond to identified spaces on the floor plans.*

## \$500,000

Museum Gallery (11) - Reserved  
Battlefield Overlook Event Center (27)

## \$250,000

Adams County Archives (33)  
Changing Gallery (10)

## \$100,000

Charles H. Glatfelter Reading Room (32)  
Museum Concourse (4) - Reserved  
Event Center Gallery (26) - north end  
Archives Gallery (26) - south end

## \$50,000

Seminar Room (9)  
Entryway/Vestibule (2) - Reserved  
Exhibit Gallery (11) - Introductory Film  
Exhibit Gallery (11) - Prehistory  
Exhibit Gallery (11) - Native American Presence  
Exhibit Gallery (11) - Frontier Life  
Exhibit Gallery (11) - Revolutionary America  
Exhibit Gallery (11) - A New County  
Exhibit Gallery (11) - Adams County in the Civil War  
Exhibit Gallery (11) - The Citizens of 1863  
Exhibit Gallery (11) - Memorialization and Commercialization  
Exhibit Gallery (11) - A New Century  
Archival Processing Room (34)

## \$25,000

Gift Shop (12)  
Café Lounge (18)  
Reading Room Foyer (31)  
Administrative Lobby (24)  
Patio (21)  
Adams County History Library (32)  
Battle of Gettysburg Research Library (32)  
Historic Collections Area (33) - Reserved  
Adams County Records Area (33)  
Artifact Storage Facility (secondary building)  
North Staircase (5)  
South Staircase (5)  
East Staircase (35)  
Café (19) - Reserved  
Elevator (6)  
Event Center Auxiliary Room (28)  
East Hall (14)

## \$10,000 - \$24,999

Historic Collections -  
Choose to have your name(s) listed as sponsor(s) of a historic collection in the holdings of the Adams County Historical Society. Names will be displayed on a recognition wall in the archives facility. If you wish to sponsor a collection that is not listed below, please contact ACHS.

John L. Burns Collection  
Catherine Stanton Carter Collection  
Elwood W. Christ Collection  
Dr. William Culp Darrah Collection  
Dr. Robert Fortenbaugh Collection  
Dr. Charles H. Glatfelter Collection

## \$10,000 - \$24,999 (continued)

Walter Hess Collection  
Dr. John L. Hill Collection  
Horner Family Collection  
John Keith Johnson Family Collection  
Phil Jones WGET/WGTY Collection  
Kendlehart Family Collection  
Walter & Janice Lane Photographic Collection  
Elsie Singmaster Lewars Collection  
Theodore McAllister Collection  
Oscar David McMillan Collection  
McPherson Family Collection  
Dr. J.W.C. O'Neal Collection  
Ross Ramer Photographic Collection  
Ambassador John S. Rice Collection  
Henry Scharf Hotel Gettysburg Collection  
William C. Storricks Collection  
William H. Tipton Gettysburg Photographic Collection  
Frances McClean Topper Collection  
J.B. Waddle Photographic Collection  
Arthur Weaner Collection  
Ira Williams Photographic Collection  
David Wills Collection and Law Library  
Charles Morris Young Art Collection

To make a pledge, please complete our official pledge form. If not enclosed with this pamphlet, the form can be completed online or downloaded at [www.achs-pa.org/campaign](http://www.achs-pa.org/campaign).  
Thank you for your commitment to Adams County history!

# *A Home for Your History*

## Museum - Archives - Education Center



### Capital Campaign Steering Committee

Jacqueline D. White, Chair  
Jake Boritt  
Charles "Cliff" Bream  
Barbara J. Finfrock  
Christopher M. Gwinn  
Susan Colestock Hill  
Wayne D. Hill  
Leslie Trew Magraw

Benjamin K. Neely  
Randy L. Phiel  
John Rice  
Cynthia L. Salisbury  
Phillip L. Spaugy  
Dora L. Townsend  
James E. Williams

### Board of Trustees

Clinton H. Eppleman, Chair  
Heidi H. Gillis, Vice Chair  
Rev. Howard F. Burrell, Treasurer  
Lawrence S. Korczyk, Secretary  
Ronald B. Frenette  
Jean Howard Green  
Carol A. Hegeman  
Theodore C. Hirt

Antigoni L. Ladd  
Jane S. Malone  
Elsie D. Morey  
Bruce M. Neylon  
Jane E. Nutter  
Alan K. Patrono  
Dr. Carol Reardon  
Jacqueline D. White

### Staff

Andrew I. Dalton  
Jill R. Ingalsbe  
Maria Lynn

Althea C. Riley  
Timothy H. Smith

[www.achs-pa.org/campaign](http://www.achs-pa.org/campaign)

P.O. Box 4325, Gettysburg, PA 17325  
(717)334-4723 / [info@achs-pa.org](mailto:info@achs-pa.org)